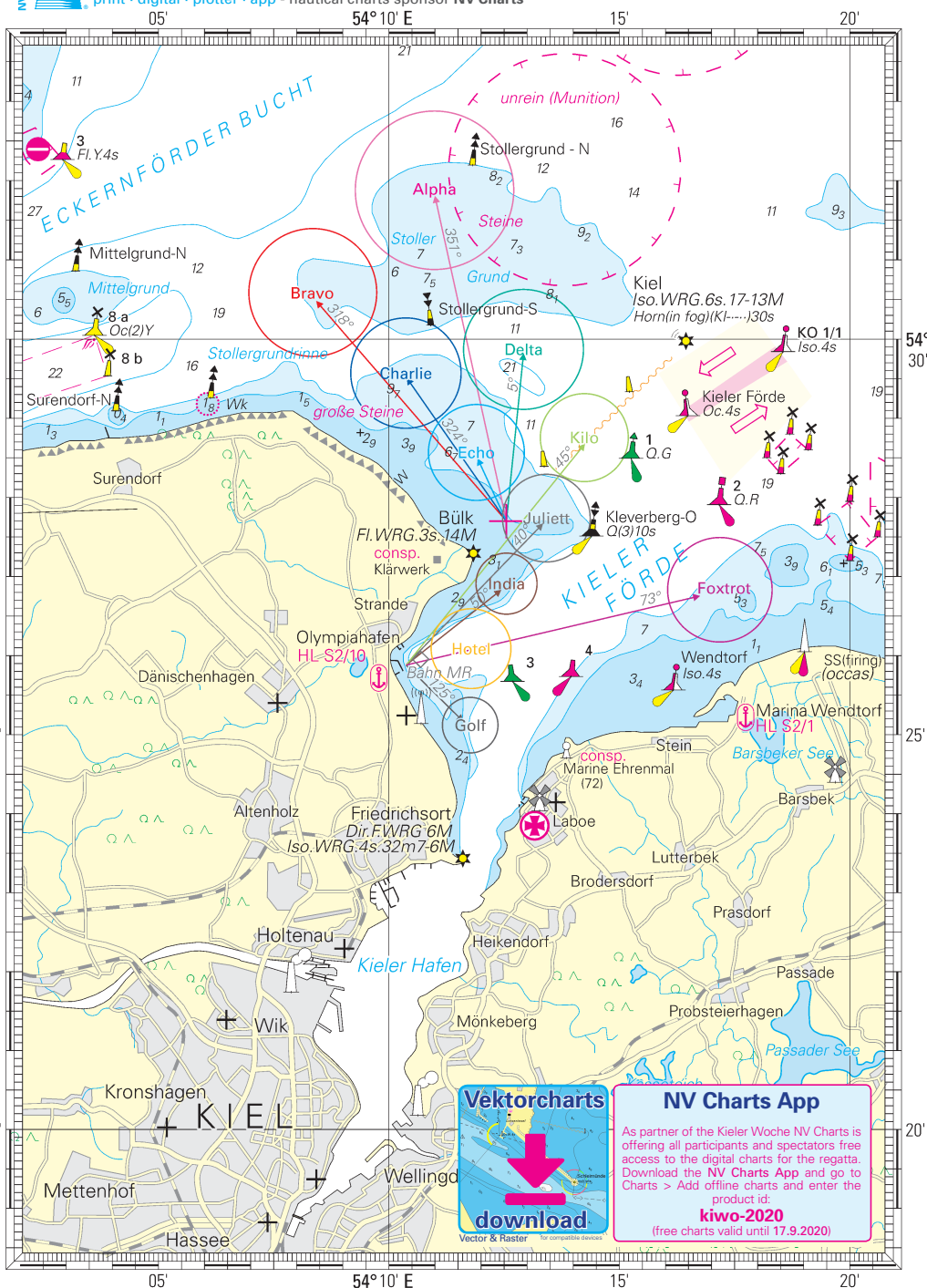




print · digital · plotter · app · nautical charts sponsor NV Charts



Race signals

Postponement signals

AP	AP over H	AP over A
↑... ↓	↑... ↓	↑... ↓
Not started races are postponed. 1 min after removal, the announcement signal is given if the race has not been postponed/cancelled again at this time.	Not started races are postponed. Further signals on land.	Not started races are postponed. No more races today.

AP over Number pennants

Shift by 1 - 9 hours relative to the scheduled start time.

1	2	3
↑... ↓	↑... ↓	↑... ↓
4	5	6
↑... ↓	↑... ↓	↑... ↓
7	8	9
↑... ↓	↑... ↓	↑... ↓

Recall signals

X	First assistant
↑... ↓	↑... ↓
Individual recall	General recall. 1 min after removal the announcement signal is given.

Abbreviated course

S
↑... ↓
Course shortcut Rule 32.2 is in force

Further signals

L	M	Y	Blue
↑... ↓	↑... ↓	↑... ↓	↑... ↓
Ashore: An announcement was posted for the participants. On the water: Come within calling distance or follow this boat.	The object that shows this signal replaces a missing mark.	Personal buoyancy aids must be worn.	Flag or signal body. This race committee boat is at the finish line on station.

Termination signals

N	N over A	N over H
↑... ↓	↑... ↓	↑... ↓
All started races are cancelled. Return to the starting area. 1 min after removal, the announcement signal is given if the race has not been postponed/cancelled again at this time.	All races are cancelled. No more races today.	All races are cancelled. Further signals on land.

Preparatory signals

P	I	Z
↑... ↓	↑... ↓	↑... ↓
Preparatory signal	Rule 30.1 applies	Rule 30.2 applies

U	Black
↑... ↓	↑... ↓
Rule 30.3 applies	Rule 30.4 applies

Change of the next leg of the course

C		
↑... ↓	↑... ↓	↑... ↓
The position of the next mark was changed:	to starboard	to port

↑... ↓	↑... ↓
Shortening the leg of the course	Extension of the leg of the course